

# Peterson

## Land & Auction LLC.

Chisum Peterson  
Broker/Owner/Auctioneer

118 S Main St.  
PO Box 498  
Chamberlain, SD 57325  
605-234-4214 office 605-730-4214 mobile  
[www.petersonlandauction.com](http://www.petersonlandauction.com)  
chisumpeterson@midstatesd.net



**Rare opportunity** to purchase a well located, commercial parcel in a high traffic area of Chamberlain. Located at the corner of Courtland Street and Mott Avenue this 140' x 120' property is right along the truck route and is passed by almost everyone traveling south through Chamberlain.

City of Chamberlain water comes to the property on the east side and city sewer on the North end. The property does feature a 35' x 116' concrete area along Courtland Street.

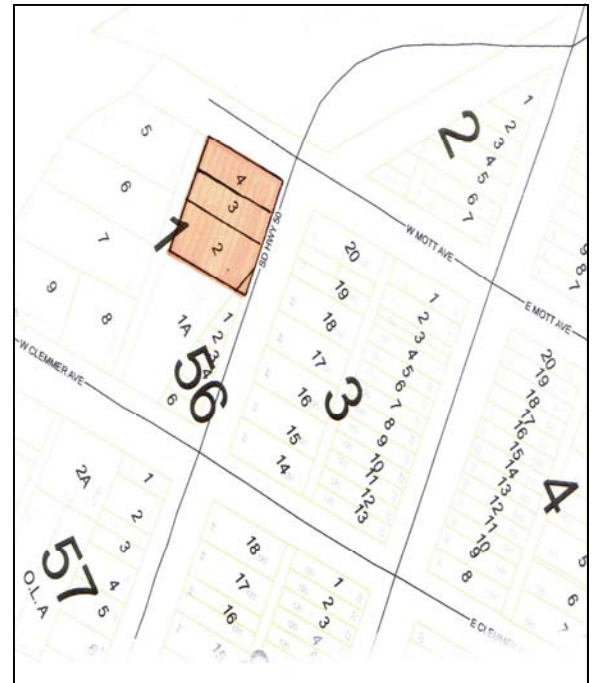
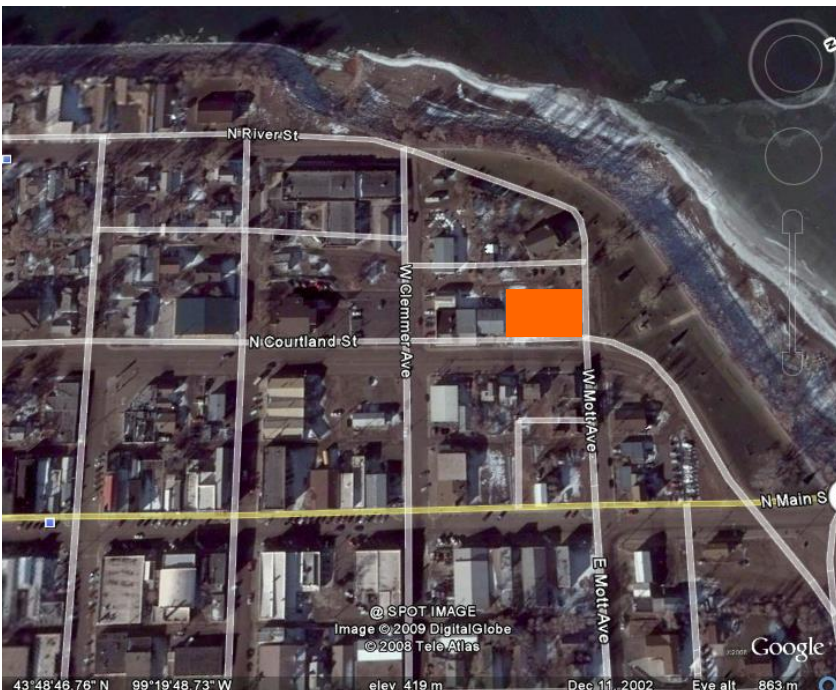
*This amended listing does not include any buildings formerly utilized.*

Legal Description: Lots 2, 3 and 4 and North Part of Lot 1, Block 1, Railroad Addition, Chamberlain.

**PRICE REDUCED TO \$89,000**

Real Estate Taxes: \$1221.62 (2008)

For more information call our office anytime.



*All sizes are approximate. Information obtained is from sources deemed reliable, but not guaranteed. No warranty-implied or expressed.*