

# LAND FOR SALE

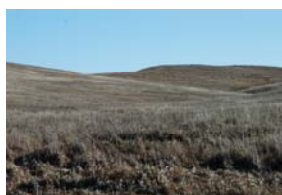
## 320 +/- Acres of Tripp County, SD Land

**Property Location:** From Winner, SD, go South 3.5 miles on 315th Ave ("South County Road"), 1 mile West on 282nd St, 1 mile South on 314th Ave, 1 mile West on 283rd St then 3/4 mile South on 313th Ave. Entrance to the property is marked by an orange Peterson Land & Auction sign. Property shown by appointment only.

**Legal Description:** South 1/2 South 1/2 of Section 23-T198N-R77W and Northwest 1/4 of Section 26-T98N-R 77W of the 5th PM, Tripp Co., SD. 320 +/- acres. **2010 R.E. Taxes:** \$1346.42 (\$4.20/ac).

**Listing Price:** \$672,000 (\$2100/acre)

**Broker's Note:** Unique opportunity to purchase excellent grazing and hunting land in Tripp County, South Dakota. Located just six miles South of Winner, SD this gently rolling property lies in the heart of pheasant country and is also home to mule & white-tailed deer, grouse and wild turkeys! Grass and cover is very abundant on the land as it was un-grazed in 2011. Three stock dams and a creek provide ample water for livestock and wildlife. Whether looking to add acres to an existing ranch or hunting operation, own a private hunting destination or add land to an investment portfolio this property is well-suited to buyers of all types! Call Donna to schedule a private tour of the property or to get more information!



*This listing and additional info available online at*  
[www.petersonlandauction.com](http://www.petersonlandauction.com)

**Peterson**  
Land & Auction

Donna Kubik, Broker Associate  
605-840-1793 mobile  
donna@petersonlandauction.com  
310 Sorensen Dr, PO Box 498  
Chamberlain, SD 57325  
605-234-4214 office